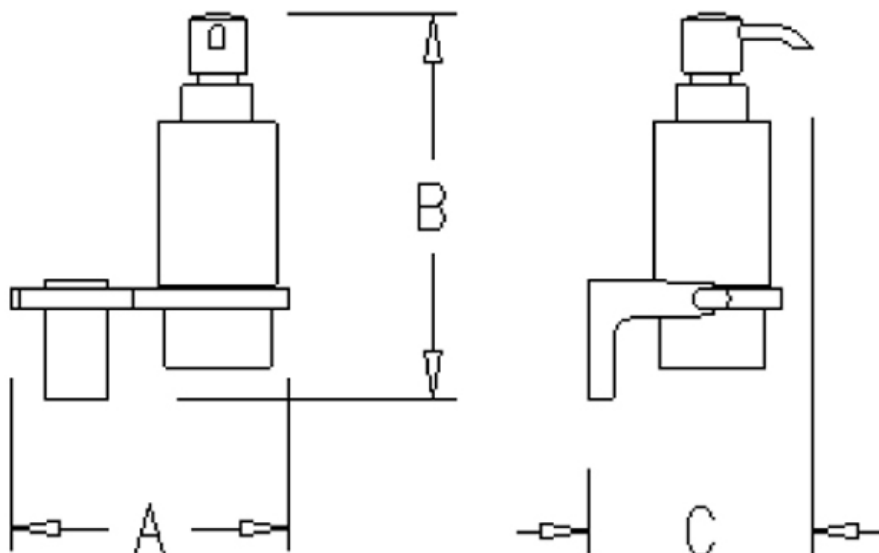


ELETECH SOAP DISPENSER - CHROME

60729.02

ELEMENTi



A: 117 mm / 4,61"

B: 163 mm / 6,42"

C: 95 mm / 3,74"



Residential/Light Commercial

Suitable for Residential/Light Commercial Use (Kitchens, Bathrooms and Laundries in Motels, Hotels and Retirement Villages)

10

Guarantee

10 Year Guarantee



Made in Spain



Galvanic Plating:
Chrome

Galvanic plating process. Covering with 0,3 - 0,4 microns chrome average. 240 Hours salt spray tested (equivalent to 6 years corrosion resistance).



Galvanic Plating:
Brushed Nickel

Galvanic plating process protected with transparent lacquer coating (thickness 40-50 microns). 120 Hours salt spray tested (equivalent to 2 years resistance).





Powder Coated:
Black

Epoxy powder coating. Cured at 200°. Coating thickness
50- 60 microns. 240 Hours salt spray tested (equivalent
to 6 years corrosion resistance).

With its flawless finish, the Eletech collection combines sophistication and cleverly formed shapes to achieve a unique look.