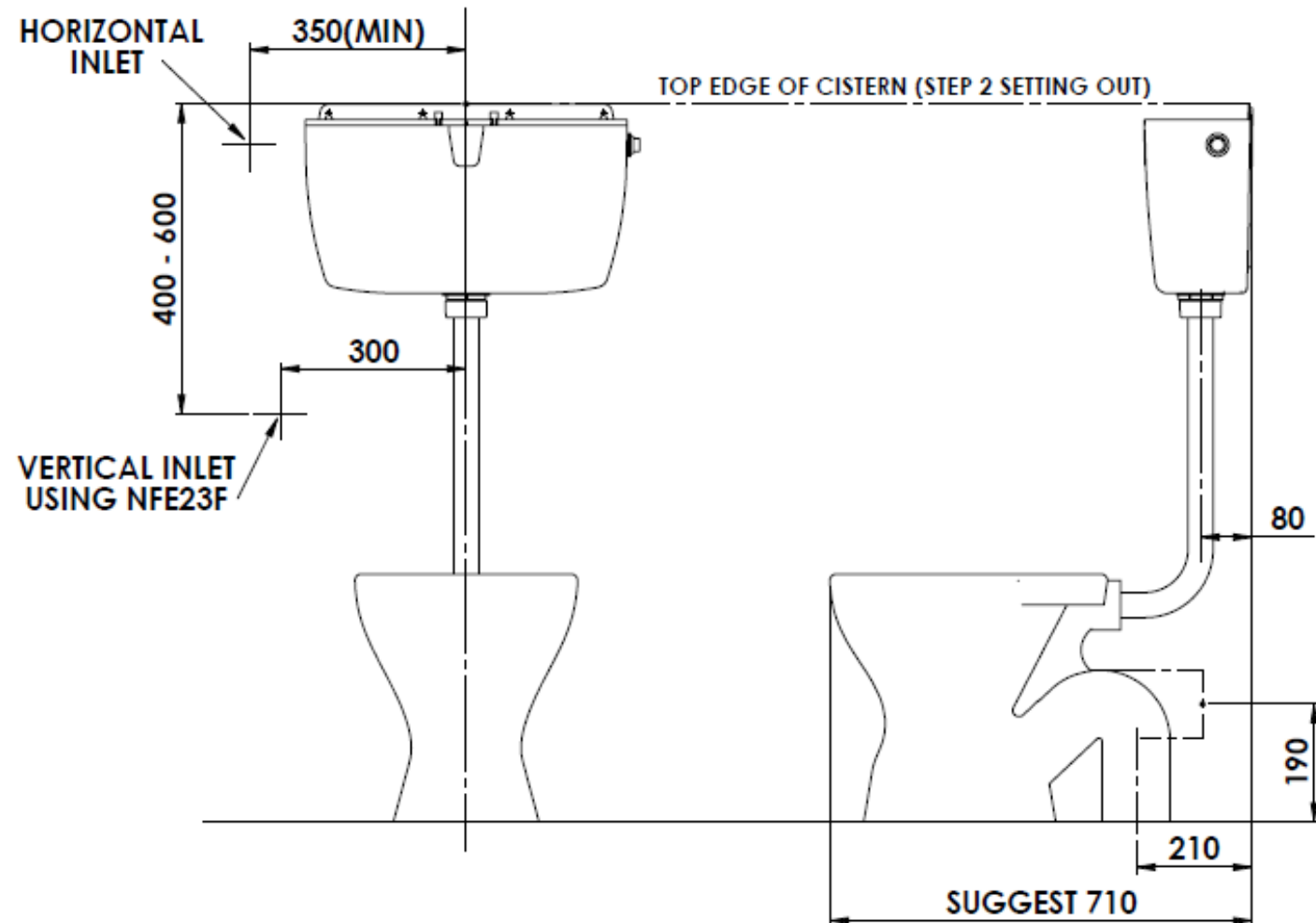


**INSTALLING**

1. Take the lid off the cistern leaving the protective film in intact, it is preferable to leave this intact until any paint work is completed.
  2. Fit the Flushpipe to the back of the pan and if necessary cut the short leg of the flushpipe so that when fitted to the pan it is 80mm from the wall to the centreline of the flushpipe.
  3. Fit the reducing bush supplied to the top of the flushpipe and then sit the cistern onto the bush. Making sure that the horizontal leg of the flushpipe is horizontal. Measure the distance from the top of the cistern to the required height line as established in step 2 (Setting out). This measurement is the amount to cut off the long leg of the flushpipe. Remove the cistern and flushpipe from the pan and cut the flushpipe accordingly.
  4. Drill and fit the four mounting screws to the wall at the position established in step 3 (Setting out) leaving the screw protruding from the wall approximately 10mm.
  5. Re-assemble the flushpipe onto the pan with the reducer bush and the flushpipe nut then lower the cistern onto flushpipe and the four mounting screws.
  6. Tighten the four mounting screws and Flushpipe nut.
  7. Flush any dirty water out of the water supply to prevent dirt and debris from clogging the valves.
  8. Install the inlet valve, turn on the water supply and adjust the water level to the required flushing volume.
- Installation and adjustment guidelines are on the back of this page.
9. Fit the cistern lid and check the operation of both the full and half flush modes.

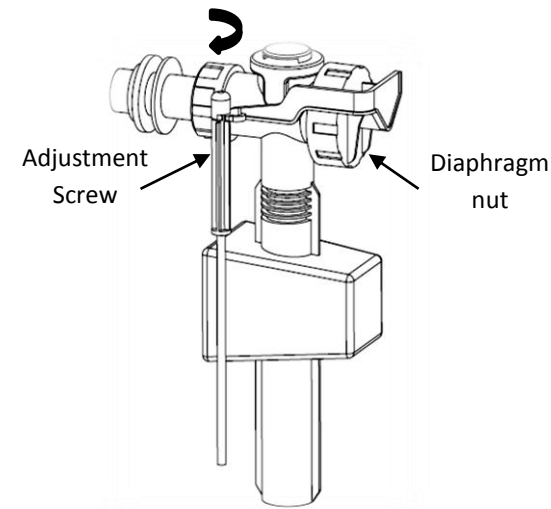
Note: If fitting the cistern to hardboard or gib board and there is no backing timber we suggest the use of "Toggles" which are readily available from hardware stores.

**Typical Layout for Dux Centreflush2 Cistern**



**Valve Installation and Service**

**Inlet Valve Installation and Service**



**Installation & Adjustment**

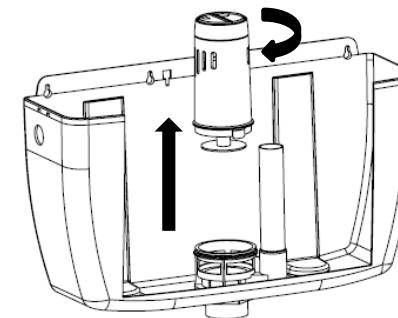
The inlet valve can be fit to either the left or right side of the cistern. Once fitted you will need to turn the water supply on and adjust the float up or down until you have the desired full flush volume. 4.5 L, 6 L or 9 L as marked on the inside edge of the cistern. To adjust the water level, turn the adjustment screw on the side of the valve.

**Service & Cleaning**

It is possible that small debris can prevent the valve shutting off. To remedy this, the diaphragm can be cleaned as follows,

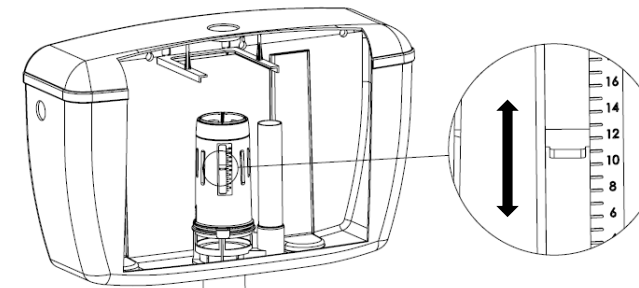
1. Unclip the adjustment screw from the float arm
2. Rotate the diaphragm nut anti-clockwise and remove the diaphragm.
3. Rinse valve and diaphragm under running water to remove any debris.
4. Re-assemble in reverse order

**Outlet Valve Removal**



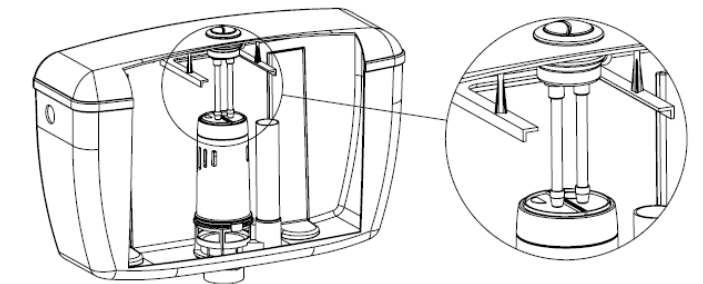
To remove the outlet valve turn the valve clockwise to unlock then lift.

**Half Flush Adjustment**



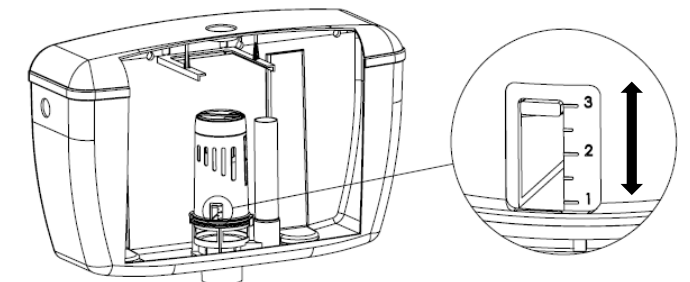
To adjust the half flush volume remove the valve and slide the float up or down. Sliding float up decreases volume. Sliding float down increases volume.

**Push Button Adjustment**



The button rods can be adjusted by screwing up or down the rod. After adjustment there should be 1 -2mm gap between the button rod and valve.

**Full Flush Adjustment**



To adjust the full flush volume remove the valve and slide the adjuster up or down. Sliding adjuster up decreases volume. Sliding adjuster down increases volume.

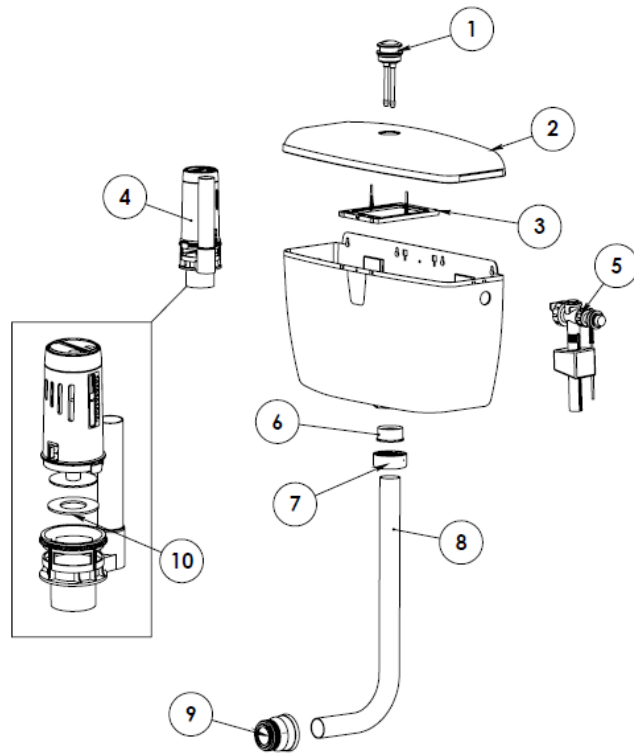
**Flushing Volume Valve Settings**

FLUSHING VOLUME	WATERLINE	HALF FLUSH SETTING	FULL FLUSH SETTING
9/4.5 Litre	9 L	11	1
6/3 Litre	6 L	11	3
4.5/3 Litre	4.5 L	4	3

### Maintenance and Troubleshooting

- For cleaning use a damp soapy cloth. **DO NOT** use abrasive cleaners.
- If the outlet valve does not stay open when the button is activated the button rods are too short refer to "Push Button Adjustment"
- If water flows into the pan when the lid is fitted the button rods are too long refer to "Push Button Adjustment"
- If water continuously flows out of the cistern, check the outlet valve sealing washer, clean or replace if worn
- If the inlet valve does not shut off refer to inlet valve "Service and Cleaning"
- The flush valve may make some noise when shutting off this is normal

### Cistern Breakdown & Spare Parts



#### CFDFUWWH2 - SPARE PARTS LIST

No	Description	Part code
1	Push Button	CFLLB5039
2	Cistern Lid	CF2LIDSP
3	Cross Brace	CF2XBSP
4	Outlet Valve	LLB4910SP
5	Inlet Valve - Side Entry	SEB3200B
6	Flushpipe Reducer	CSFRC
7	Flushpipe Nut	CFFNCT
8	Flushpipe	CSFCWH
9	40mm Pan Connector	CSFCC
10	Outlet Valve Sealing Washer	CFLL30795

### DUX WARRANTY

#### DUX CISTERNS AND INTERNAL VALVING

THIS WARRANTY IS INCLUSIVE OF THE FOLLOWING DUX PRODUCTS

**CENTREFLUSH, CENTREFLUSH2, LOLINE, DELMONTE, MONTEGO, VIENNA, SANITINWALL CISTERN, GEMINI MODE**

Plastic cistern outer case and lid: Five years from date of purchase subject to the conditions below

Internal valving and plastic components: One year from date of purchase subject to the conditions below

#### CONDITIONS

- Installation has been carried out by a licensed plumber in accordance with the installation instructions
- All maintenance and adjustments to the product after installation have been carried out by a licensed plumber
- No additives have been introduced into the toilet cistern tank
- Only mild household detergent and soft (non-abrasive) cloth has been used to clean the product
- All goods of standard quality manufacture will be credited or replaced by Dux when advised within the stipulated warranty period, subject to prior inspection and agreement
- Proof of purchase is required for warranty claims

#### LIMITATIONS

To the extent permitted under the consumers guarantee act and other relevant legislation, Dux's liability is limited to:

- The cost of replacing the goods, or
- The cost of obtaining equivalent goods, or
- The cost of having the goods repaired
- Dux is not responsible for any lack of operation or performance of goods (or any loss or damage) where goods are used or adapted for a purpose for which they are not designed.
- Dux is not responsible for any lack of operation or performance of goods (or any loss or damage) where goods are combined or integrated with other goods not supplied by Dux.
- It is the responsibility of the customer and installer to ensure the goods are correct and free from obvious visible faults prior to installation.
- Dux is not responsible for the labour and rectification costs incurred in the above circumstance.

Physical Address	Postal Address	
Dux Industries Limited 32 Mahia Road Manurewa Auckland 2012	Private Bag 802 Manurewa Auckland	Tel: 0800 367 389 Fax: (09) 2792851 dux@dux.co.nz www.dux.co.nz



CF2INST

Date: 14/01/2013

## INSTALLATION INSTRUCTIONS

### DUX CENTREFLUSH2 CISTERN

Code: CFDFUWWH2

#### DURABILITY:

Dux cisterns comply with the NZBC durability requirements of 5 years, if installed and maintained in accordance with these instructions. The installer is responsible for the workmanship of the installation. The product is intended for the flushing of W.C. pans in commercial and residential applications. The approval of the distributor must be obtained for all other applications.

#### GENERAL:

To achieve satisfactory operation it is important to fit the 40mm Flushpipe supplied and the most efficient flushing is obtained with the cistern mounted as high as possible on the wall. If it is desirable to reduce the height, cut the flushpipe to suit, however it is suggested that for good flushing the flushpipe should be at least 300mm in vertical length.

This cistern is supplied with an internal overflow so no external overflow is required.

#### CHOICE OF SEAT:

It is important to ensure that the seat will remain upright when lifted. This is a function of the model of seat and the distance the pan is set from the back wall.

We recommend the use of Dux toilet seats,

1. Dux Twinline or Classic seats in which the hinging point is forward of the seat mounting holes in the pan.
2. Dux Royal or Regent seat these seats should be fitted onto the pan first and then checked to see that the seat will stay upright when lifted. The full length flushpipe is usually sufficient with most pans if the front edge of the pan is at 710mm from the back wall.

#### INCREASING/DECREASING FLUSH VOLUME:

This cistern as supplied is factory set for a 6 litre full flush and 3 litre half flush when used with a 6-litre pan that complies with AS1172.1:1993.

If required this cistern can be adjusted to a 4.5/3 litre flush (4 star rating) when used with a 4.5 litre pan.

When older style pans are used it may be necessary to increase or decrease the flushing volume to achieve satisfactory flushing. The flushing volume can be increased or decreased by easily adjusting the valve adjustments shown on the back of this page.

#### SETTING OUT:

1. Mark a vertical centreline on the wall on which the cistern is to be mounted in line with the centre of the pan outlet.
2. Position the cistern central with the vertical line using the centreline on the top inside face of the cistern and at the previously determined height. Make sure that the top edge of the cistern is level and pencil a line along the top edge of the cistern.
3. Mark the position of the four mounting screw points
4. Position the water inlet either on the horizontal line 66mm below the top edge of the cistern at no less than 350mm from the centreline or if a vertical supply tube with a bend is preferred a Dux Qickee supply kit plus a NFE23FWH bend is available as a separate kit. Part No. NIV22500FWH. In this case position the inlet at 300mm from the centreline and at 600mm to 400mm from the top edge of the cistern.