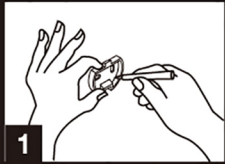


The logo for 'dorf' is displayed in a white, lowercase, sans-serif font. A white horizontal line is positioned below the letters 'o' and 'r'.

Kip Toilet Roll Holder

Installation Instructions



Step 1

Place the mounting bracket against the wall in the desired position, then mark & drill fixing holes.



Step 2

Fully insert the appropriate screw plug* supplied and affix the mounting bracket using screws supplied.



Step 3

Place the base of accessory on mounting bracket and tighten grub screw(s).



***Solid walls**
Ø 6 mm
40 mm depth



***Tiled cavity walls**
Ø 8 mm

Toggle bolts (not supplied) should be used for untiled cavity walls.