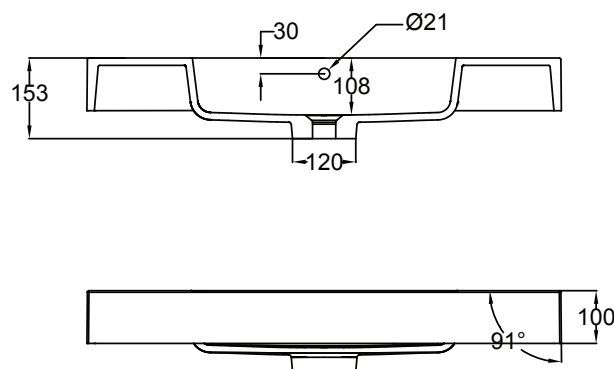
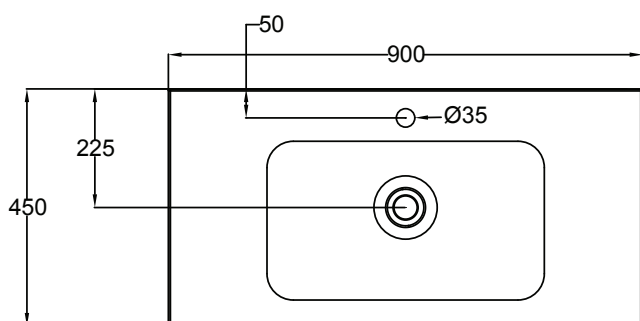


SP90DWH/SP90DWHM
SPLASH
900, 1 DRAWER

vcboc
FOR BATHROOMS



Splash Basin

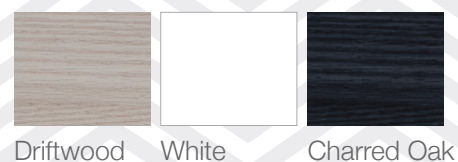


NB: Drawings indicate the technical measurements only and is not a reflection of how the unit will look.

SP90DWH/SP90DWHM
SPLASH 900, 1 DRAWER

- Dimensions - W 900mm H 425mm D 450mm
- Polymarble top. Polymarble is a composite product and is very durable.
- Paint - The paint used on our products is polyurethane or UV based. It is five times harder and more durable than lacquer finishes. White only.
- TIMBER EFFECT (Melamine)- Our woodgrain melamine is a low pressure laminate. Two colours are available Charred Oak and Driftwood.

FINISHES



Driftwood

White

Charred Oak

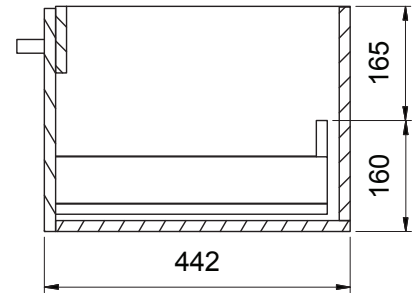
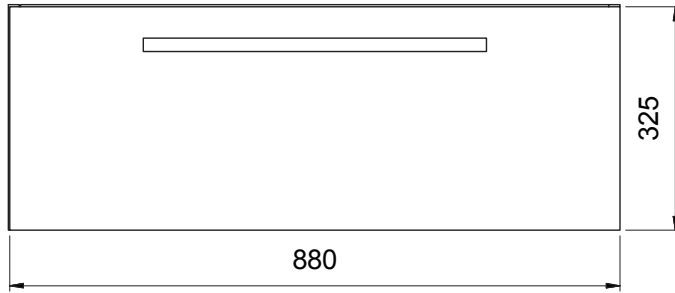
SP90DWH/SP90DWHM

SPLASH

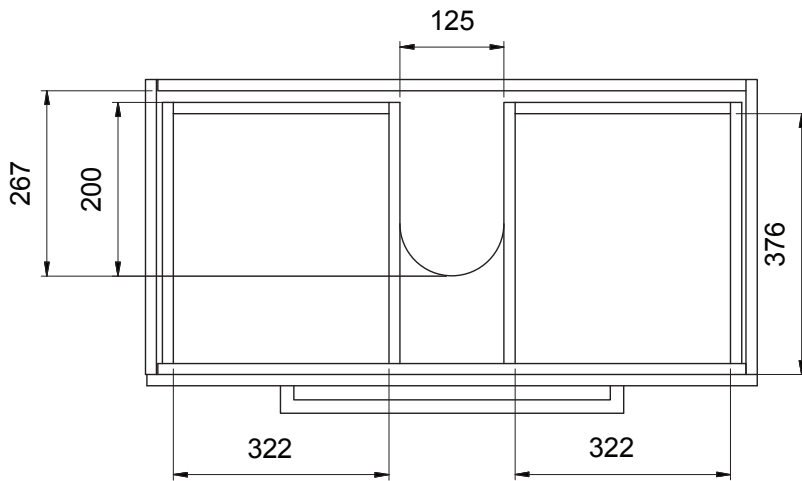
900, 1 DRAWER



Splash Cabinet



SPLASH Drawer Wall Units Side View



SP90DWH Top View showing Drawers

NB: Drawings indicate the technical measurements only and is not a reflection of how the unit will look.