

Cabriole Kitchen Sink - 1 1/4 Bowl

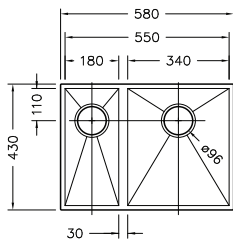
Crisp, geometric design with '90° square corner' bowls, all produced from high quality, brushed stainless. Bowls are 1mm thickness.



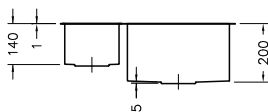
- Features**
 - 1 1/4 Bowl.
 - Undercounter installation.
 - Overflow.
 - Noise dampening liner.
- Colour/Finish**
 - Brushed stainless steel.
- Material**
 - 1mm thick grade 304 stainless steel construction.
- Included Components**
 - Stainless steel sink.
 - 2 wastes.
 - Fixing kit.

Technical Details

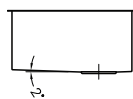
Top View



Front View



Side View



Product	Product Code
Cabriole kitchen sink - 1 1/4 Bowl	72055A-S-NA



Trusted in New Zealand Since 1982

New Zealand
 133 Diana Drive, Glenfield, Auckland, New Zealand
 PO Box 100-146 NSMC, Auckland, 0745
 Ph: 0800 100 382 Fax: 0800 66 44 88
www.Englefield.co.nz

All measurements shown are in millimetres.
 Sizes are approximate.

Mar 2014
 1221108-A04-B