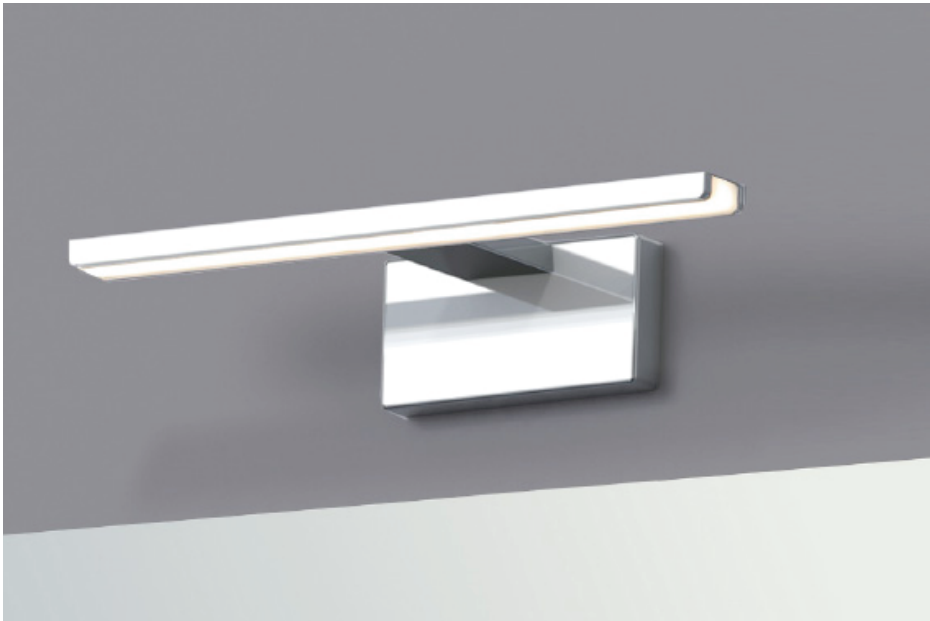
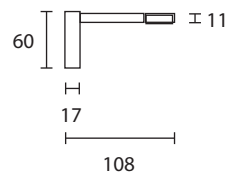
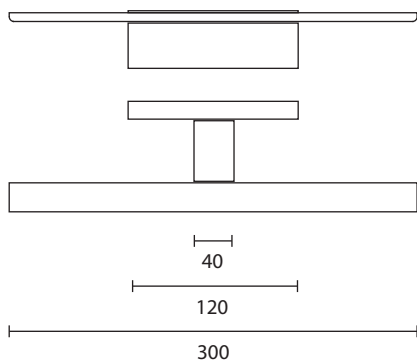


# Daylight 300/600 Wall

## Light Specification



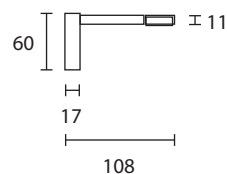
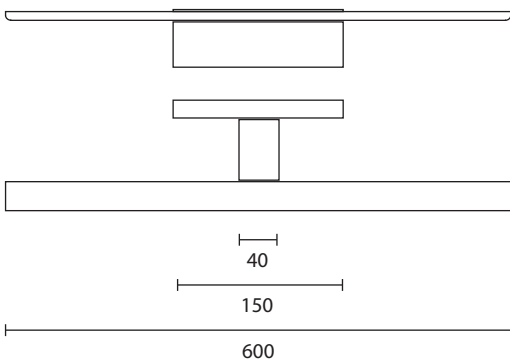
Daylight 300 - 9615



### Wall Version

Daylight Wall 300 -  
Chrome on Aluminium  
5W LED 240V IP20  
4000k Natural White Light  
Controller/Driver included in  
mounting case  
(no transformer required)

Daylight 600 - 9616



### Wall Version

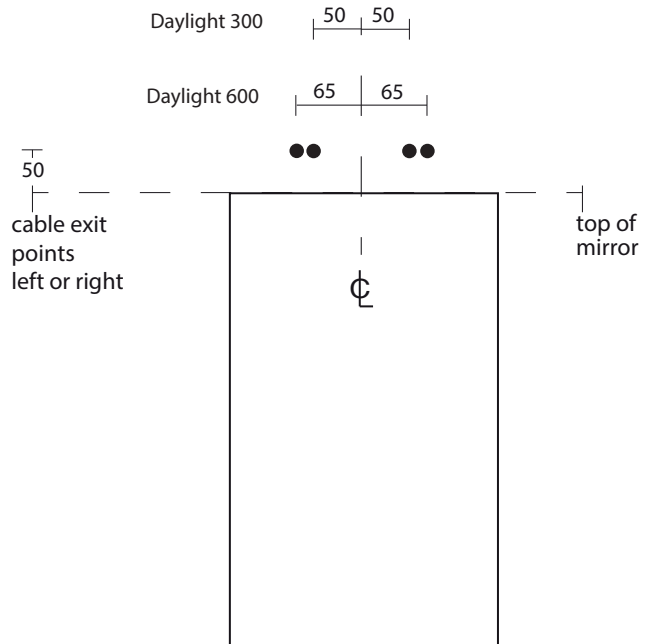
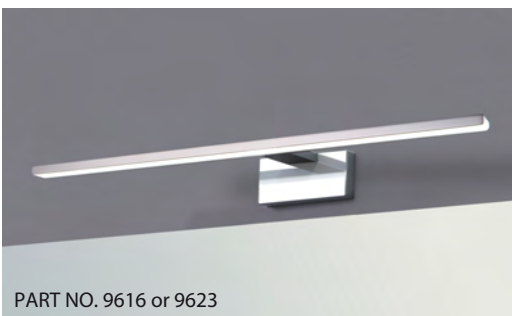
Daylight Wall 600 -  
Chrome on Aluminium  
8W LED 240V IP20  
4000k Natural White Light  
Controller/Driver included in  
mounting case  
(no transformer required)

# Daylight 300 / 600 Wall

## Installation Instructions

# 3

### Fitting Above a Mirror



## INSTALLATION

- 1 / Decide height of mirror, suggested 1940mm above finished floor level. Height should be based on desired height for individual
- 2 / Electric cable should exit 50mm above finished mirror height and 50mm (Daylight 300) / 65mm (Daylight 600) left or right of mirror centre line.
- 3 / Attach light fitting to wall. Detach wall bracket from light fitting and secure to wall 80mm above finished mirror height
- 4 / Connect wiring and attach mounting box to wall bracket. Note: Apply pressure to mounting box while tightening fixing screws with star lock washers

## IMPORTANT



Device is Insulation Class II

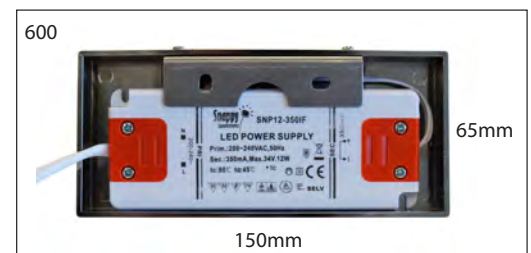
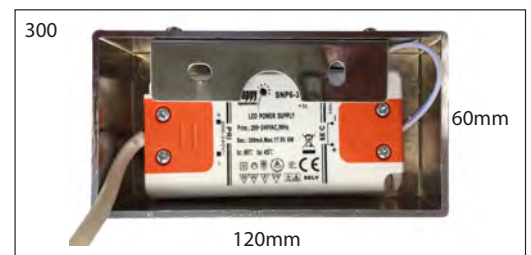
For indoor use only. Ta 25°C



Nominal voltage AC 200-240v 50 Hz

This light must be installed in accordance with current AS/NZS wiring rules

If the supply cord is damaged it must be replaced by the manufacturers, its service agent or similar qualified persons in order to avoid potential hazard



Rear view of mounting box with detachable wall bracket. Note: driver can be rotated for left or right wiring

Revised: 11/2017

Models 9615, 9616, 9622, 9623

St Michel Industries Ltd, PO Box 21 122, Henderson, Auckland | Phone: 09 837 4276 | www.stmichel.co.nz

st.michel  
BATHROOMWARE