

Valencia™ Elite Alcove Pivot Shower - 1000mm, 900mm

The Valencia Elite Alcove Pivot Shower combines exceptional performance with ease of installation. Beautifully engineered, this shower is available in a range of finishes, sizes and wall options. The enclosure features a fully reversible door boasting 6mm toughened safety glass with Englefield CleanLess® glass treatment. The Quick-Fit low profile tray features an ultra high 40mm upstand for maximum watertightness, ensuring long lasting performance.



Note: Tapware and accessories illustrated in photography are not included

Shower Options

Frame: Black, White, Polished Silver, Satin Silver.
Size: 1000x1000mm, 900x900mm.
Wall: Corner Contour Plus, Side Recessed, Flat or Tile Option.
Tray: Centre waste.
Height: 2000mm (1930mm without tray).

Material/Finish

Frame - powder coated aluminium (black, white) - anodised aluminium (polished silver, satin silver)
 Wall - Duracryl acrylic
 Tray - fibreglass reinforced acrylic
 Glass door - 6mm toughened safety glass (AS/NZS 2208 compliant) with Englefield CleanLess® glass treatment.

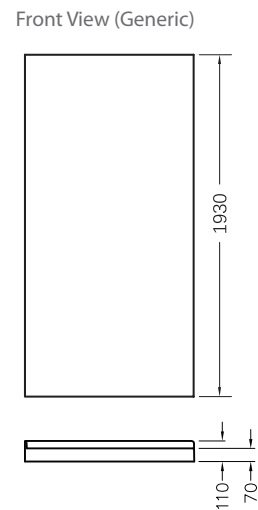
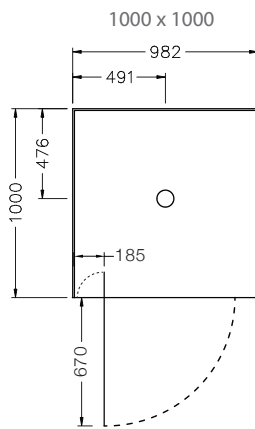
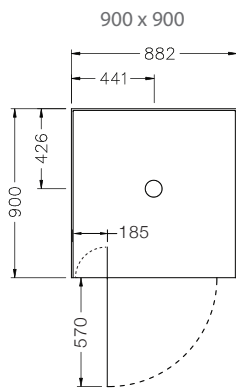
Included Components

Valencia Elite Door. Flat or moulded wall (NOTE: Tile option does not include acrylic wall or tiles). Acrylic wall finishing strips. Quick-Fit Low Profile Tray. Chrome Easy Clean Trap* (NZ) or Hi-Flow Waste (Aus). Adhesive and Sealant pack (NZ).

Optional Accessories

Hi-Flow Waste Outlet.

*Black Easy Clean Trap provided with black frame showers



Product Codes

1000 x 1000mm	Black Centre Waste	White Centre Waste	Polished Silver Centre Waste	Satin Silver Centre Waste
Corner Contour Plus Wall	706756A-BL	706756A-0	706756A-SHP	706756A-SS
Flat Wall	706757A-BL	706757A-0	706757A-SHP	706757A-SS
Side Recessed Wall †	706756A-3CRW-BL	706756A-3CRW-0	706756A-3CRW-SHP	706756A-3CRW-SS
Tile Wall	706819A-BL	706819A-0	706819A-SHP	706819A-SS

900 x 900mm	Black Centre Waste	White Centre Waste	Polished Silver Centre Waste	Satin Silver Centre Waste
Corner Contour Plus Wall	706758A-BL	706758A-0	706758A-SHP	706758A-SS
Flat Wall	706759A-BL	706759A-0	706759A-SHP	706759A-SS
Side Recessed Wall †	706758A-3CRW-BL	706758A-3CRW-0	706758A-3CRW-SHP	706758A-3CRW-SS
Tile Wall	706820A-BL	706820A-0	706820A-SHP	706820A-SS

Note:
 † For Side Recessed walls the recessed feature will be on either of the side walls (i.e: not opposite the door). The design is reversible so the moulding can be on left or right.