

LUNA WALL HUNG BASIN INSTALLATION INSTRUCTIONS PLEASE READ CAREFULLY BEFORE INSTALLATION

IMPORTANT

Provide suitable reinforcement behind finished wall for the basin D.200 Fixing Kit at the fixing height position.

Roughing in for D.200 Basin Fixing Kit:

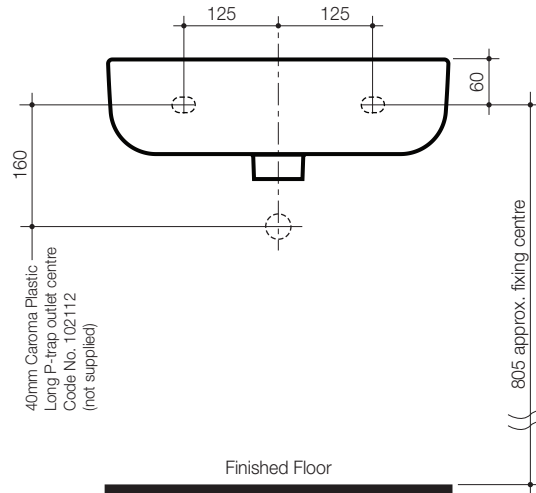
For timber stud walls, nogginns and studs must be positioned at a height to allow for the location of fasteners as detailed in **Fig. 1**.

BASIN INSTALLATION WITH D.200 BASIN FIXING KIT

- 1- Mark Fixing Screw hole position on finished wall at the recommended height as detailed in **Fig. 1**.
- 2- Drill two Ø12mm holes in masonry wall for Expansion Fasteners. For timber stud walls drill two Ø8mm holes for Fixing Screws.
- 3- Insert Expansion Fasteners into the drilled holes in masonry wall. The Fixing Screws should be screwed into the wall using the flat section of the Fixing Screw with a spanner as shown in **Fig. 2**. Allow 50 mm of thread to protrude from the finished wall.
- 4- Locate basin onto the Fixing Screws on the wall. Insert Plastic Bushes, Washers and fasten to wall with Fixing Nut to complete assembly as detailed in **Fig. 3**.
- 5- The Plastic Bush allows for leveling adjustment if required by rotating the hexagonal head bush, the basin will be slightly raised or lowered as shown in **Fig. 3**.
- 6- Fit taps and waste assembly to the basin.
- 7- Tighten Fixing Nuts and connect plumbing to complete the installation.

D.200 Basin Fixing Kit

40mm Caroma Plastic Trap layout



Modina and Eco 40mm Bottle Trap layout

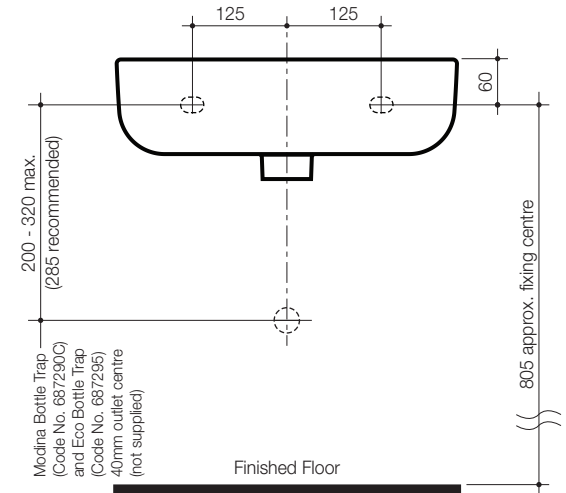
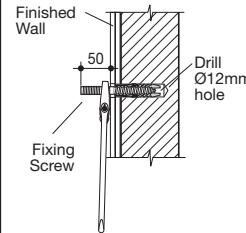


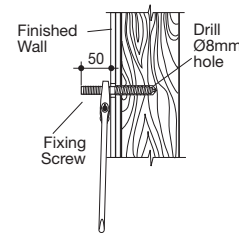
Fig. 1

IMPORTANT:

Fixing Screw Masonry Walls Installation



Fixing Screw Timber Stud Walls Installation



D.200 Basin Fixing Kit

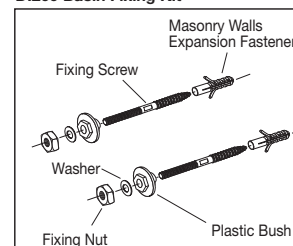


Fig. 2

D.200 Basin Fixing Kit Completed Installation

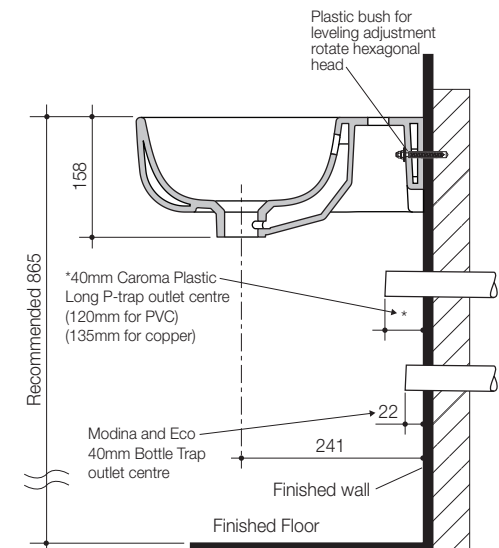


Fig. 3