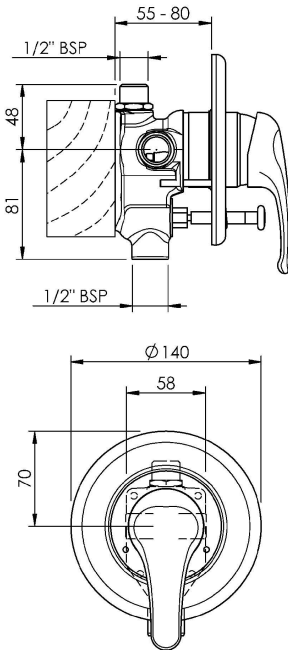


PROMIX SHOWER MIXER



CARTRIDGE TYPE: Ceramic

CLASSIFICATION: Suitable for mains pressure only

INLET CONNECTIONS: 1/2" BSP male

WORKING PRESSURE: 150 - 1000kPa

DIMENSIONS FOR FITTING: -

OPERATING TEMPERATURE: 5 °C - 80 °C

- Cartridge with adjustable temperature and flow settings
- Positive seal between faceplate and wall/body
- Concealed screws to attach faceplate
- Template protects the mixer during installation
- Non-return in shower outlet
- Flow restrictor for shower flow
- Pressure operated spring diverter
- Diverter defaults to spout

PRSHDCP

Chrome

<http://www.methven.com/nz/promix-shower-mixer-with-diverter>