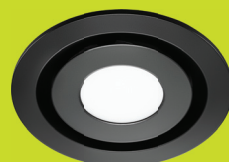


MANROSE[®]
DESIGNER SERIES

CONTOUR
FAN SYSTEMS

Setting the
Standards in Ventilation
Solutions



Manrose Contour Fan Systems

the new standard in powerful, stylish, easy to install, configurable extract systems

Pressure to Perform

Style • Simplicity • Flexibility

Fans designed to meet G4 Building Code and the Healthy Homes Standard

The G4 Building Code covers the mandatory extract ventilation requirements for bathrooms and kitchens and the AS/NZS standards provide the latest guidelines for internal wet area zones in general. In addition, the Healthy Homes Standard makes it a requirement to fit extract fans in rental properties.

Keeping things simple

Manrose have designed the Contour range of fans for specific room applications as defined as acceptable solutions to G4 and as prescribed in NZS 4303:1990, AS 1668: Part 2: 2002 and other leading standards in ventilation as well as the Healthy Homes Standard.

Great installers can select with confidence

Our installers ensure the basics are always done right with duct runs and numbers of bends kept to a minimum. Indeed, they do everything they can to make fan installs as good as they can be. Now, by choosing the Contour fan designed for a particular room application, they can also be assured that all installations comply with the relevant building code and standards. Even more challenging installs, such as complex duct runs where very high airflow rates are required for high steam areas, are catered for.

Fan curves making it easy

The fan curves provided clearly show that the respective fan airflows delivered, with up to 10 metres of straight ducting attached, exceed the respective airflow requirements for each model.

The following performance table shows the minimum extraction rates required for installed systems as opposed to the fan only.

| Room | Intermittent (min) | Continuous (min) |
|-----------------------|--------------------|------------------|
| Toilet ¹⁾ | 25 l/s | 10 l/s |
| Bathroom/shower | 25 l/s | 10 l/s |
| Laundry ²⁾ | 40 l/s | - |
| Kitchen | 50 l/s | 12 l/s |

Form and function

Good performance is not enough. The new range of fans have a wide selection of fascias available making sure that the end users have a great looking solution to meet their bathroom design as well.

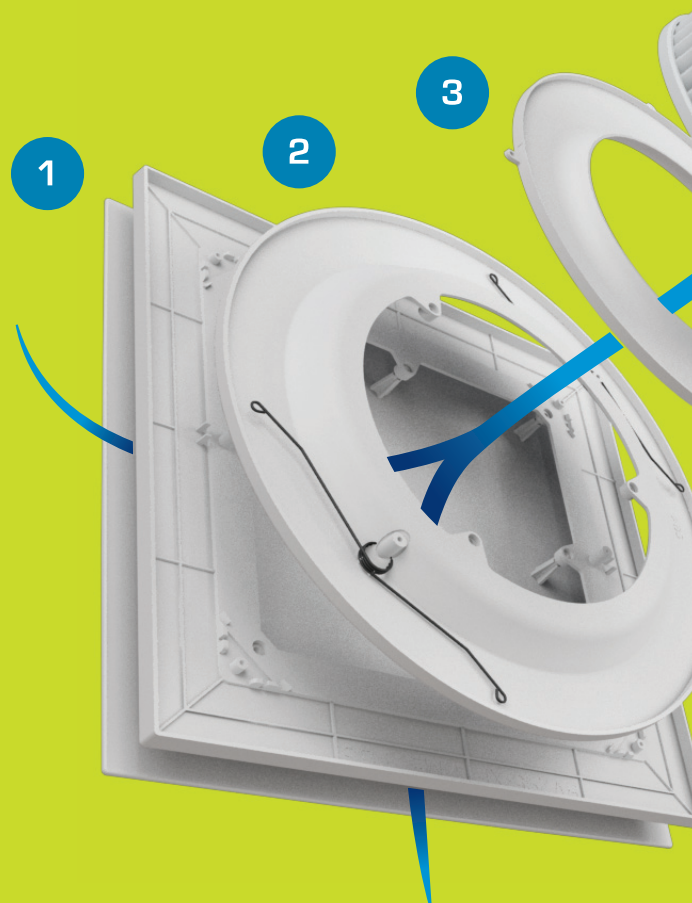
| | |
|---------------------|--------------------------------------|
| Fan | Round or Square Fascia Options |
| Toilet | White or Black (with or without LED) |
| Bathroom | White or Black (with or without LED) |
| Kitchen and Laundry | White or Black (with or without LED) |
| High Steam Area | White (fitted) |

¹⁾ Toilets only require ventilation if they have no openable windows

²⁾ Simx recommend 40 l/s for laundries with unvented non-condensing tumble dryers as covered in AS 1668: Part 2 2012

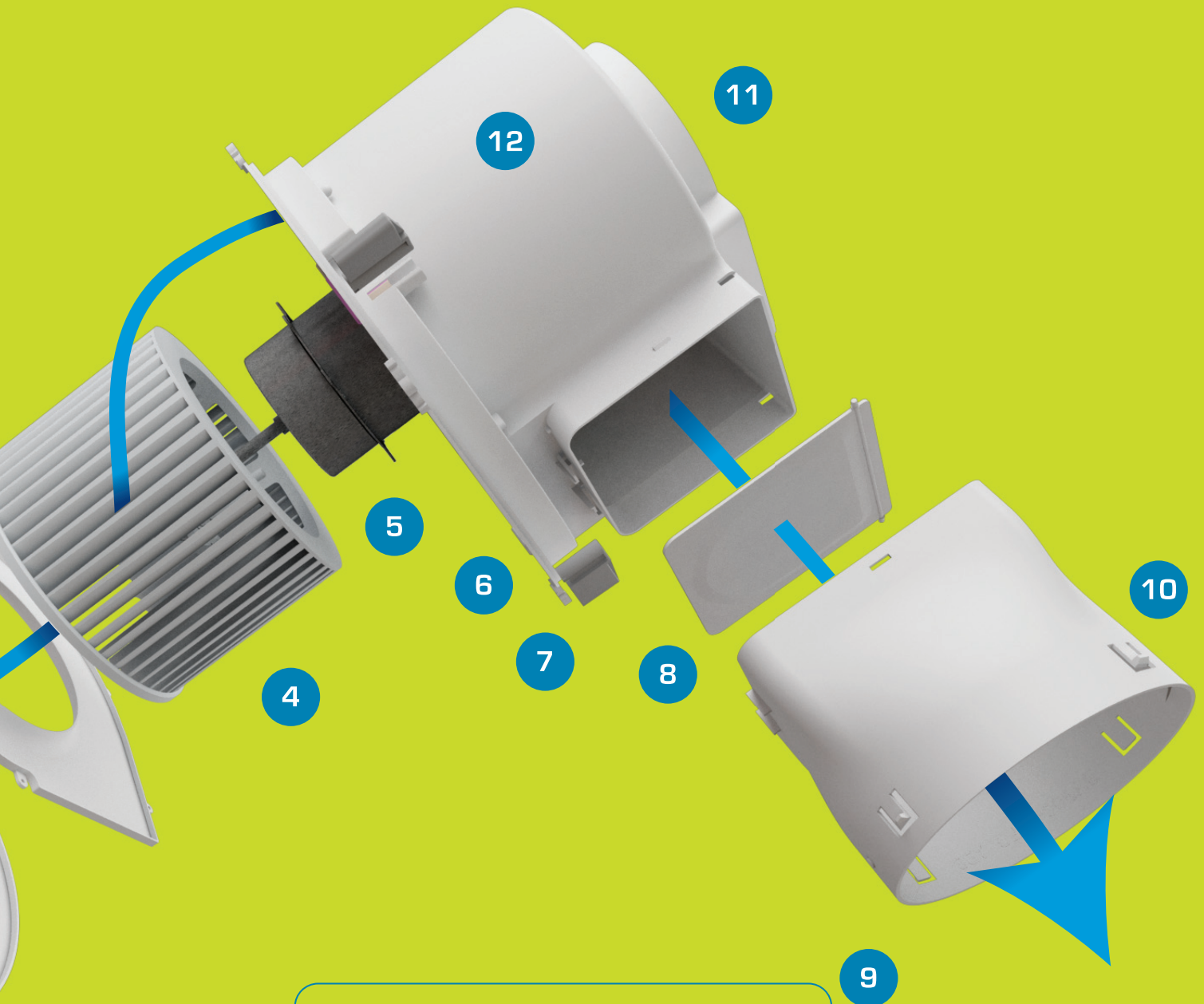
Solution Simplicity

- 1 Wide range of aesthetic round and square fascias with, or without, LED's
- 2 Spring fit fascia for onsite installation ease and speed
- 3 Profiled fan scroll cover to maximise airflow and performance
- 4 High performance, high pressure centrifugal impeller
- 5 Sealed motor with long life Japanese SI steel bearings
- 6 Knock out for cable feed for easy fit optional LED fascias
- 7 Swing out arms for easy installation – no need to screw into plasterboard and fast to fit
- 8 Integrated backdraught shutter – saves losing heat or cooling out through your fan
- 9 Deep spigot for easy duct connection
- 10 Side ducted and low profile designed to fit in multi-story buildings with restricted floor void
- 11 Pre fitted plug and lead for quick and easy on-site installation
- 12 Robust black polypropylene body to handle construction site conditions



CONTOUR

FAN SYSTEMS



Fan Timer - FAN2444

Adjustable Run ON Time
& Start Delay

1 sec to 90 mins

Suitable for use with all Contour fans

5
YEAR
WARRANTY

CONTOUR

TOILET FAN



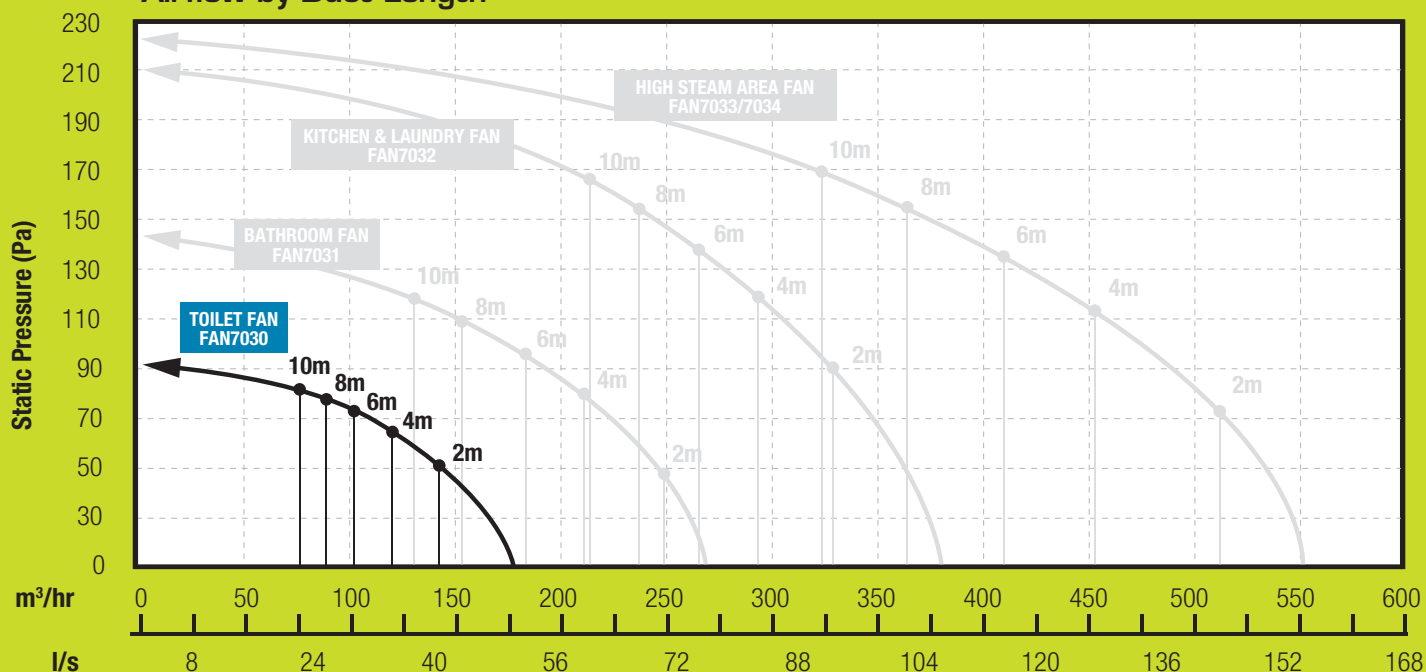
Airflow Rates

The tables below indicate the minimum installed performance required to meet the new G4 Building Code. Only required if no openable windows.

Minimum System Airflow Rates

| | |
|--------------|--------|
| Intermittent | 25 l/s |
| Continuous | 10 l/s |

Airflow by Duct Length



Fan and Optional Fascia Selections

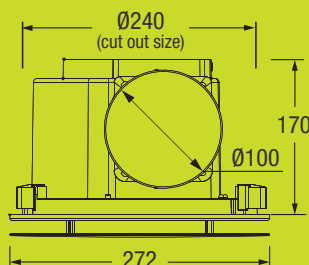
| | |
|---------|---------------------------|
| FAN7030 | Toilet Fan - 100mm |
| DCT4502 | Fascia - Round White |
| DCT4503 | Fascia - Round Black |
| DCT4504 | Fascia - Square White |
| DCT4505 | Fascia - Square Black |
| DCT4506 | LED Fascia - Round White |
| DCT4507 | LED Fascia - Round Black |
| DCT4508 | LED Fascia - Square White |
| DCT4509 | LED Fascia - Square Black |

Specifications

| | |
|----------------------|--------------------|
| Supply | 220-240V AC |
| Power | 30W |
| Max. Fan Pressure | 93 Pa |
| Fan Performance | 49 l/s, 175m³/hr |
| Specific Fan Power | 0.61 W/l/s |
| Sound Level | 38 dB(A) |
| Install Depth (min.) | 200mm |
| LED | 10W, 850 lm, 4200K |
| Protection Rating | IP44 |



Dimensions (mm)



CONTOUR

BATHROOM FAN



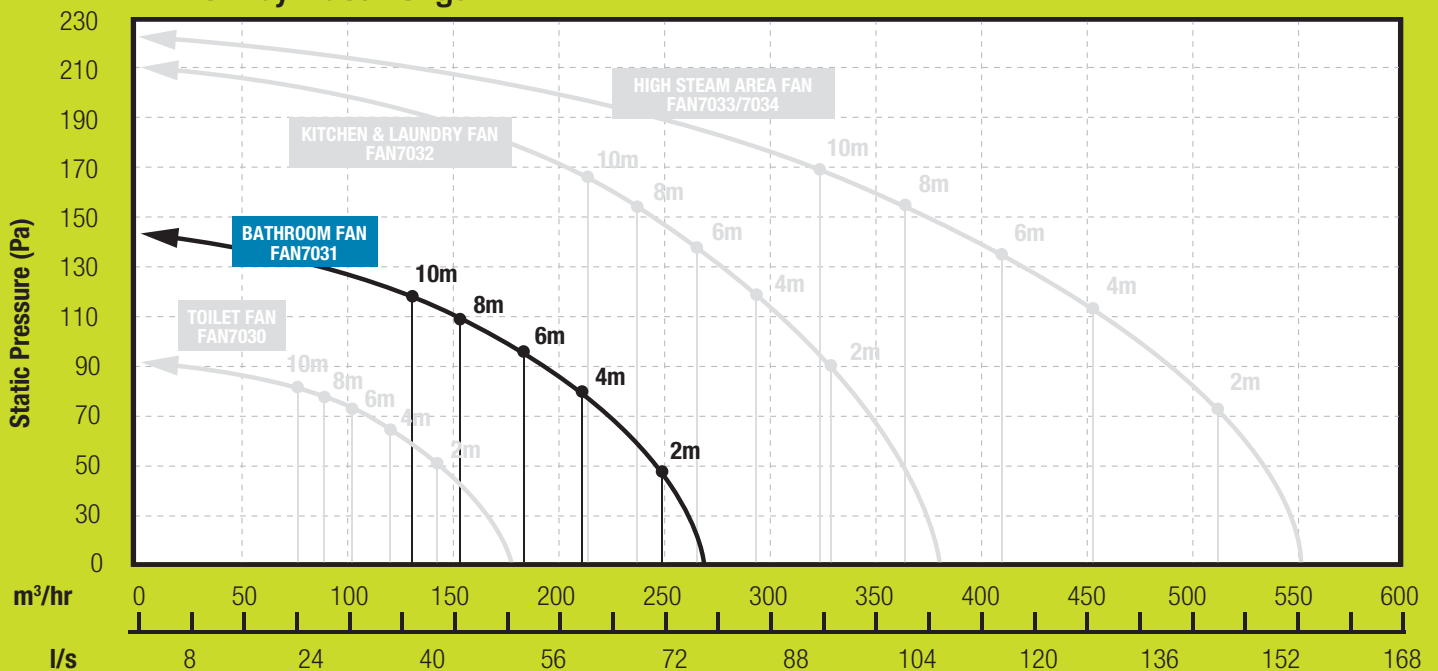
Airflow Rates

The tables below indicate the minimum installed performance required to meet the new G4 Building Code.

Minimum System Airflow Rates

| | |
|--------------|--------|
| Intermittent | 25 l/s |
| Continuous | 10 l/s |

Airflow by Duct Length



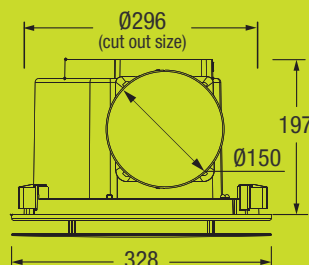
Fan and Optional Fascia Selections

| | |
|---------|---------------------------|
| FAN7031 | Bathroom Fan - 150mm |
| DCT4510 | Fascia - Round White |
| DCT4511 | Fascia - Round Black |
| DCT4512 | Fascia - Square White |
| DCT4513 | Fascia - Square Black |
| DCT4514 | LED Fascia - Round White |
| DCT4515 | LED Fascia - Round Black |
| DCT4516 | LED Fascia - Square White |
| DCT4517 | LED Fascia - Square Black |

Specifications

| | |
|----------------------|---------------------|
| Supply | 220-240V AC |
| Power | 45W |
| Max. Fan Pressure | 147 Pa |
| Fan Performance | 77 l/s, 276m³/hr |
| Specific Fan Power | 0.58 W/l/s |
| Sound Level | 40 dB(A) |
| Install Depth (min.) | 200mm |
| LED - Round | 14W, 1265 lm, 4200K |
| LED - Square | 14W, 1290 lm, 4200K |
| Protection Rating | IP44 |

Dimensions (mm)



CONTOUR

KITCHEN and LAUNDRY FAN



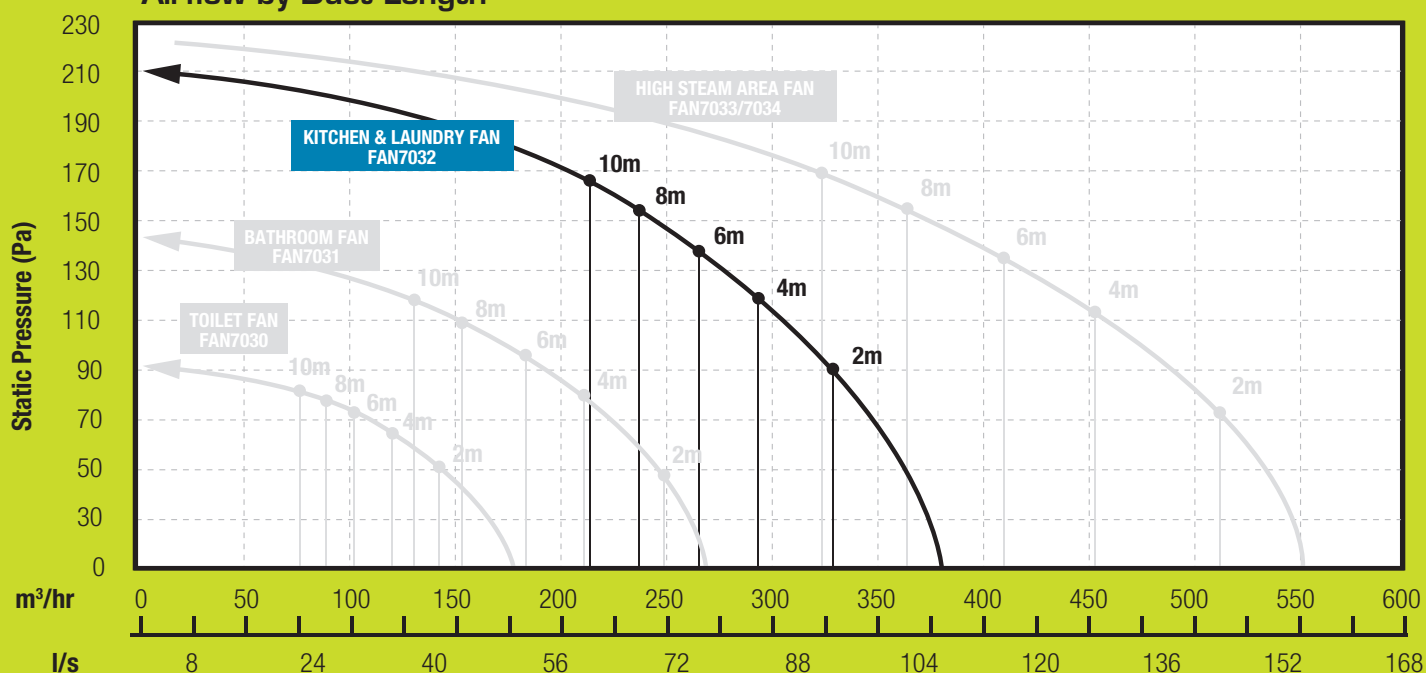
Airflow Rates

The tables below indicate the minimum installed performance required for kitchens to meet the new G4 Building Code.

Minimum System Airflow Rates

| | |
|--------------|--------|
| Intermittent | 50 l/s |
| Continuous | 12 l/s |

Airflow by Duct Length



Fan and Optional Fascia Selections

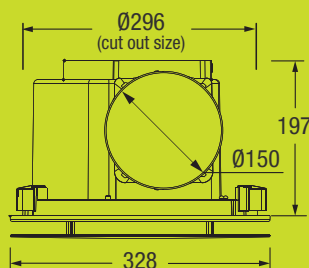
| | |
|---------|---------------------------------|
| FAN7032 | Kitchen and Laundry Fan - 150mm |
| DCT4510 | Fascia - Round White |
| DCT4511 | Fascia - Round Black |
| DCT4512 | Fascia - Square White |
| DCT4513 | Fascia - Square Black |
| DCT4514 | LED Fascia - Round White |
| DCT4515 | LED Fascia - Round Black |
| DCT4516 | LED Fascia - Square White |
| DCT4517 | LED Fascia - Square Black |

Specifications

| | |
|----------------------|---------------------|
| Supply | 220-240V AC |
| Power | 50W |
| Max. Fan Pressure | 210 Pa |
| Fan Performance | 105 l/s, 378m³/hr |
| Specific Fan Power | 0.48 W/l/s |
| Sound Level | 42 dB(A) |
| Install Depth (min.) | 220mm |
| LED - Round | 14W, 1265 lm, 4200K |
| LED - Square | 14W, 1290 lm, 4200K |
| Protection Rating | IP44 |



Dimensions (mm)



CONTOUR

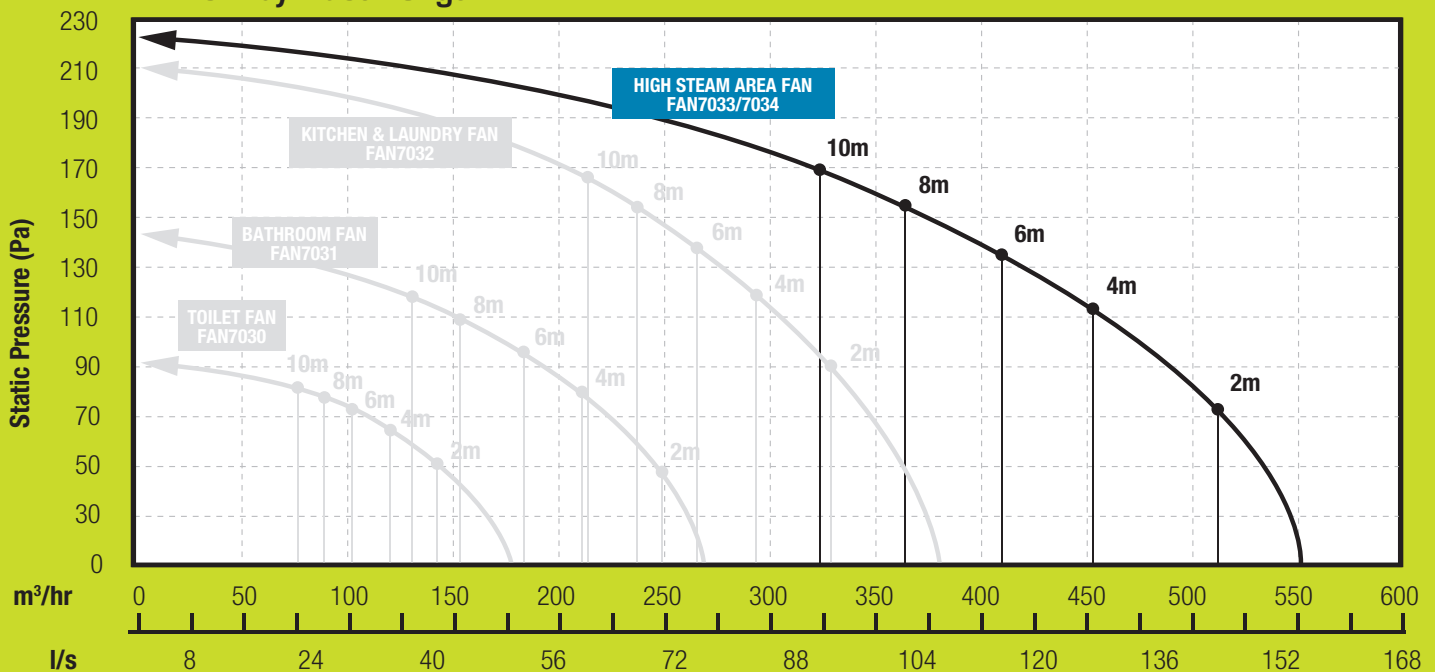
HIGH STEAM AREA FAN



Airflow Rates

High steam area fans are designed for any application needing higher airflow, or for applications with unusually complex, or demanding duct runs where extraordinary fan pressure is required.

Airflow by Duct Length



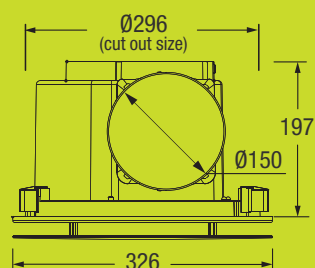
Fan with Fitted Fascia Selections

- FAN7033 High Steam Area Fan - 150mm with Round Fascia
- FAN7034 High Steam Area Fan - 150mm with Square Fascia

Specifications

| | |
|----------------------|-------------------|
| Supply | 220-240V AC |
| Power | 106W |
| Max. Fan Pressure | 220 Pa |
| Fan Performance | 153 l/s, 550m³/hr |
| Specific Fan Power | 0.69 W/l/s |
| Sound Level | 42 dB(A) |
| Install Depth (min.) | 220mm |
| Protection Rating | IPX4 |

Dimensions (mm)



MANROSE®

Manrose leads the market in air movement and air extraction. Developed and designed to meet the specific application needs of the New Zealand market, Manrose fans perform to those exacting standards for the life of the product.

Manrose fans, fan kits and air movement accessories deliver elegance and innovation in reliable and durable solutions everytime.



E6337

Complies with AS/NZS Standards
Specifications are subject to change without notice.

Distributed by Simx Limited

PO Box 14347, Panmure, Auckland 1741, New Zealand

p +9 259 1660 | e enquiry@manrose.co.nz | w www.manrose.co.nz

PUB1515 2108