

Planning & Installation Information



Sto

Guideline Overview

1

Homeowner Message

Understand your role in the project.

2

Product Specification

Selection of product and general product specifications, this could be useful for your installer

3

Site Preparation

These are site preparation instructions for your builder to follow. We recommend that you discuss the Site Preparation Instructions with your builder so you both understand exactly what is to be completed prior to product installation. If Site Preparation instructions are not followed then this could void your St Michel Warranty

4

General Installation Info

Installation information is for your builder and your plumber as they will split the tasks on the job. Note that plumbers will take varying degrees of involvement during installations. Make it clear to both of them that points 1-8 must be followed. If General Installation Instructions are not followed then this could void your St Michel Warranty

Homeowner Message

PLEASE READ THIS IF YOU ARE THE HOMEOWNER

Thank you for choosing St Michel bathroom furniture. We are keen to help you achieve a beautiful functioning bathroom by offering some important guidance around the installation process.

You have a very important role to play

Creating or renovating a bathroom is not a simple exercise so you will need to rely on a professional tradesperson. However it is important that you take an active role in over-seeing some of the tasks your tradesperson performs.

Ask your Builder & Installer to follow the instructions in this information pack

By asking your Tradespeople to follow these instructions you will ensure:

- They will properly understand your desired bathroom layout
- They will clearly understand that you expect walls to be prepared and furniture to be installed to St Michel guidelines
- You will ensure that your St Michel bathroom furniture operates and performs for many years to come and is covered by our Warranty. Failing to do so could affect your warranty.

1 Identify the room your product should be installed

Identify Room here

2 Your Special Instructions to the installer

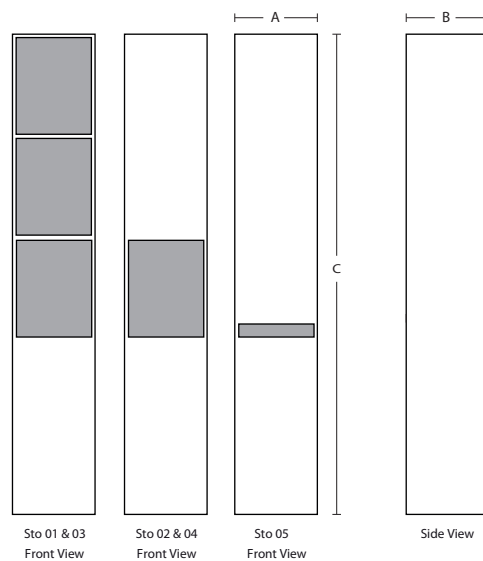
SOME EXAMPLES OF SPECIAL INSTRUCTIONS YOU MAY WANT TO CONSIDER

Vanities	Side Furniture	Mirrors and Lighting
State preferred height of wall mounted vanity.	Consider finished height of low furniture.	Mirror height : Consider all user heights.
Do you want a side 'packer' installed between the vanity and wall?	Allowing for power inside side storage?	Opening and closing mirror cabinet doors must clear tapware.
Special waste overflow upgrade.	Install on correct side of vanity.	Offset a recessed mirror at least 20mm off wall to easily open doors.
Ensure plumbing position(s) suit vanity configuration.	Side furniture door should open away from vanity. i.e. Easy access.	Allowing for power inside cabinet?
Install clear distance to protect from shower spray.	Are you recessing side furniture into wall? Preferred depth?	Power for lights, demister pads and preferred switch positions.
Are you installing a towel rail on the vanity?	Height off floor for tall furniture.	Solo mirrors can be mounted portrait or landscape.

Cabinet Specification

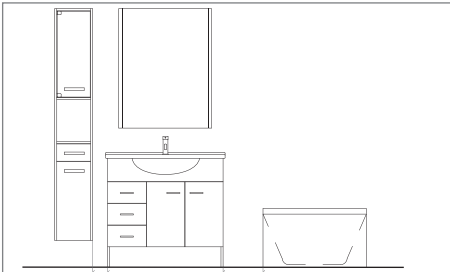


Sto Storage Towers				
Description	A	B	C	
<input type="checkbox"/> Sto 01 1 d	255	310	1740	
<input type="checkbox"/> Sto 02 2 d	255	310	1740	
<input type="checkbox"/> Sto 03 1 d	255	310	1740	
<input type="checkbox"/> Sto 04 2 d	255	310	1740	
<input type="checkbox"/> Sto 05 2 d	255	310	1740	



Site Preparation

1 POSITIONING

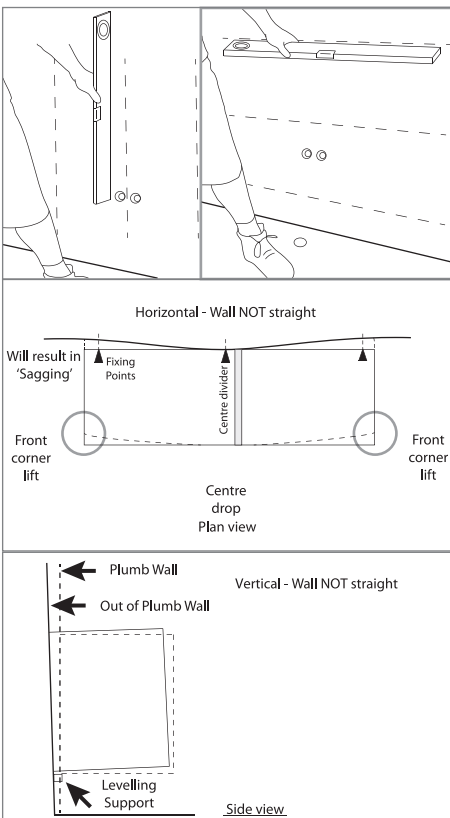


FURNITURE POSITION IS IMPORTANT

When deciding on the position of the furniture, be sure to arrange the product at least 150mm from any wet areas such as baths, spas and showers. Ensure that the floor is level (floor mounted) and that the wall is staright and plumb.

Note: Do not expose furniture to shower spray - A good quality shower screen must be fitted to the bath or shower to keep the furniture dry and prevent water damage

2 CHECK LEVELS



CHECK FOR PLUMB WALLS AND LEVEL FLOOR

WALLS:

When installing a vanity (furniture) to a wall it is essential that the wall is plumb and straight. If it is not possible to make the wall plumb and straight you must pack the vanity out so that it does not follow the out of aligned wall.

WARNING:

Fixing the vanity on a wall that is not plumb and straight will result in the following:

- Cabinet will sag as illustrated
- Cabinet will twist out of alignment and not be plumb
- Drawers will not function as designed i.e. They will appear racked, will not run correctly or smoothly and if self-closing, will not close on their own
- Doors will not align or be able to be adjusted to align
- Vanity/ basin will appear to have an accentuated twist

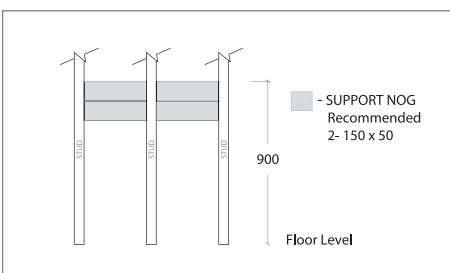
FLOOR:

As with wall hung vanities, floor standing vanities must sit on a level floor or be packed so they sit level and true

WARNING:

Fixing a vanity to a floor that is not level will result in the same adverse symptoms that appear with Drawers/Doors and Vanity

3 POSITIONING



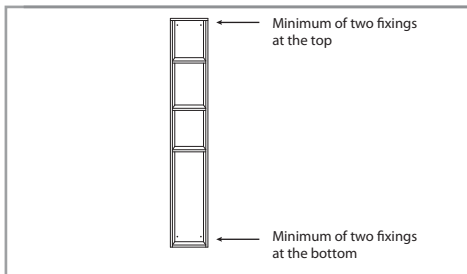
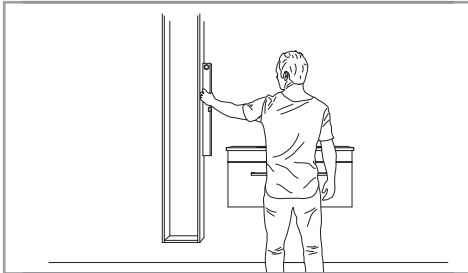
SUPPORT NOGS

Wall hung furniture and VC basins that require wall fixing. Support nogs are to be fitted between the studs, as detailed, to give a solid wall backing to attach the vanity. Fix the top nog at 900mm above the floor and ensure the total width exceeds the vanity width.

Installation Instructions

- 1 This product carries a full warranty against faulty workmanship and materials. Please inspect thoroughly before installation to ensure that the unit has not been damaged in transit.

2 CABINET FIXING



Remove the doors and/or drawers to provide access to the inside rear wall of the tower (note that all hinges are quick release for easy removal).

We recommend fixing the tower at an average of 200mm off from the floor. Adjust accordingly for height preference.

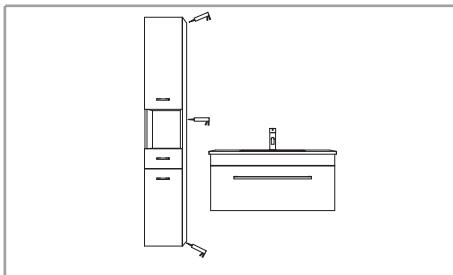
WARNING : Do not secure the cabinet to the wall until the cabinet is sitting level, plumb and square. Use suitable packing to achieve this if the wall cannot be aligned.

Position cabinet and check that it is sitting level, plumb and square.

Screw Fixing

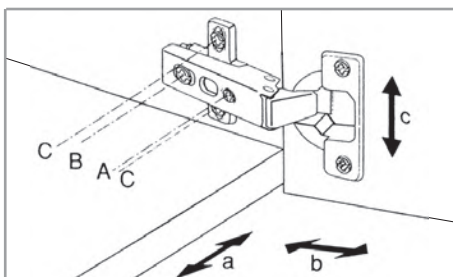
We recommend using a minimum of two fixings at the top and two fixings at the bottom of the tower.

3 SEALING



Materials used for the construction of this unit are water resistant and not waterproof. A bead of sealant (specifically formulated for bathrooms) must be used to seal all edges where water penetration can occur. i.e. Between the cabinet and the wall. Take care to dry any spillage or leakage of water onto or into the cabinet during installation.

4 HINGE ADJUSTMENT



It is the responsibility of the installer to make any adjustments to align doors after installation if required.

St Michel use clip hinges which require only light finger pressure to clip into place and allow the doors to be easily removed for access to plumbing fittings.

DOOR ALIGNMENT

Your doors have been adjusted in the factory on a level surface to achieve matching height, equal gap and surface alignment. Before you adjust the doors, ensure again that the vanity is level and true and not twisted. When level, if the doors still do not align, adjustment can be made to the hinges as follows:

A. SIDE ADJUSTMENT

To move the doors sideways in total or to level each door, turn screw A clockwise or anti-clockwise.

B. DEPTH ADJUSTMENT

To move the door inward or outward from the carcass - loosen the hinge arm fastening screw B and slide in the direction you want to go. Retighten hinge arm fastening screw B.

C. HEIGHT ADJUSTMENT

Loosen the top and bottom screw C on each mount plate, adjust and retighten.

Please ensure that the Warranty and Conditions of Use card is left in the cabinet for the homeowner.