

FELTON OXIJET™

THE OXIJET™ IS IDEAL FOR HOMES WITH MAINS (EQUAL HIGH) WATER PRESSURE.

The Oxijet™ works by jetting the water through 4 tiny nozzles, and sucking air into the stem of the shower rose. The air volumises and pressurises the water, creating tiny air bubbles within the water stream that burst when they touch your skin. In many mains pressure situations the Oxijet™ will pay for itself in water and energy savings, and help you do your part to preserve our beautiful planet.



YELLOW
TO FIT A SHOWER
HANDPIECE
TP0114



WaterMark
AS 5200.037.2.
WMK25712



Water Rating
Water Consumption
8.5
litres per minute
Mains Pressure
www.waterefficiency.govt.nz



10
YEARS
WARRANTY



EQUAL
HIGH
(MAINS)
PRESSURE
MP

FELTON OXIJET™

THE OXIJET™ IS IDEAL FOR HOMES WITH MAINS (EQUAL HIGH) WATER PRESSURE.

The Oxijet™ works by jetting the water through 4 tiny nozzles, and sucking air into the stem of the shower rose. The air volumises and pressurises the water, creating tiny air bubbles within the water stream that burst when they touch your skin. In many mains pressure situations the Oxijet™ will pay for itself in water and energy savings, and help you do your part to preserve our beautiful planet.



YELLOW
TO FIT A SHOWER
HANDPIECE
TP0114



WaterMark
AS 5200.037.2.
WMK25712



Water Rating
Water Consumption
8.5
litres per minute
Mains Pressure
www.waterefficiency.govt.nz



10
YEARS
WARRANTY



EQUAL
HIGH
(MAINS)
PRESSURE
MP

FELTON OXIJET™

THE OXIJET™ IS IDEAL FOR HOMES WITH MAINS (EQUAL HIGH) WATER PRESSURE.

The Oxijet™ works by jetting the water through 4 tiny nozzles, and sucking air into the stem of the shower rose. The air volumises and pressurises the water, creating tiny air bubbles within the water stream that burst when they touch your skin. In many mains pressure situations the Oxijet™ will pay for itself in water and energy savings, and help you do your part to preserve our beautiful planet.



YELLOW
TO FIT A SHOWER
HANDPIECE
TP0114



WaterMark
AS 5200.037.2.
WMK25712



Water Rating
Water Consumption
8.5
litres per minute
Mains Pressure
www.waterefficiency.govt.nz



10
YEARS
WARRANTY



EQUAL
HIGH
(MAINS)
PRESSURE
MP

FELTON OXIJET™

THE OXIJET™ IS IDEAL FOR HOMES WITH MAINS (EQUAL HIGH) WATER PRESSURE.

The Oxijet™ works by jetting the water through 4 tiny nozzles, and sucking air into the stem of the shower rose. The air volumises and pressurises the water, creating tiny air bubbles within the water stream that burst when they touch your skin. In many mains pressure situations the Oxijet™ will pay for itself in water and energy savings, and help you do your part to preserve our beautiful planet.



YELLOW
TO FIT A SHOWER
HANDPIECE
TP0114



WaterMark
AS 5200.037.2.
WMK25712



Water Rating
Water Consumption
8.5
litres per minute
Mains Pressure
www.waterefficiency.govt.nz



10
YEARS
WARRANTY



EQUAL
HIGH
(MAINS)
PRESSURE
MP

FELTON OXIJET™

THE OXIJET™ IS IDEAL FOR HOMES WITH MAINS (EQUAL HIGH) WATER PRESSURE.

The Oxijet™ works by jetting the water through 4 tiny nozzles, and sucking air into the stem of the shower rose. The air volumises and pressurises the water, creating tiny air bubbles within the water stream that burst when they touch your skin. In many mains pressure situations the Oxijet™ will pay for itself in water and energy savings, and help you do your part to preserve our beautiful planet.



YELLOW
TO FIT A SHOWER
HANDPIECE
TP0114



WaterMark
AS 5200.037.2.
WMK25712



Water Rating
Water Consumption
8.5
litres per minute
Mains Pressure
www.waterefficiency.govt.nz



10
YEARS
WARRANTY



EQUAL
HIGH
(MAINS)
PRESSURE
MP

FELTON OXIJET™

THE OXIJET™ IS IDEAL FOR HOMES WITH MAINS (EQUAL HIGH) WATER PRESSURE.

The Oxijet™ works by jetting the water through 4 tiny nozzles, and sucking air into the stem of the shower rose. The air volumises and pressurises the water, creating tiny air bubbles within the water stream that burst when they touch your skin. In many mains pressure situations the Oxijet™ will pay for itself in water and energy savings, and help you do your part to preserve our beautiful planet.



YELLOW
TO FIT A SHOWER
HANDPIECE
TP0114



WaterMark
AS 5200.037.2.
WMK25712



Water Rating
Water Consumption
8.5
litres per minute
Mains Pressure
www.waterefficiency.govt.nz



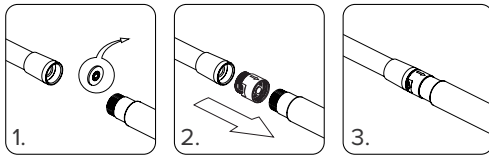
10
YEARS
WARRANTY



EQUAL
HIGH
(MAINS)
PRESSURE
MP

Oxijet™ FOR SHOWER HANDPIECE
 TP0114 0800 743 358 | www.oxijet.com

INSTRUCTIONS



1. Remove any existing flow restrictor
 2. Install the Oxijet™ and ensure seal is attached between fittings
 3. Ready to use

Note: The Oxijet™ is optimised for Felton shower handpieces and DIN EN1113 rated hoses. Only use with non-restrictive (all pressures) handpieces. Do not use non DIN EN1113 rated standard hoses and may not be compatible with some handpieces.

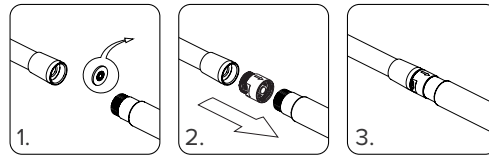
OPERATING PRESSURE
 Minimum 300 kPa
 Maximum 1000 kPa

OPERATING TEMPERATURE
 Maximum 80 °C



Oxijet™ FOR SHOWER HANDPIECE
 TP0114 0800 743 358 | www.oxijet.com

INSTRUCTIONS



1. Remove any existing flow restrictor
 2. Install the Oxijet™ and ensure seal is attached between fittings
 3. Ready to use

Note: The Oxijet™ is optimised for Felton shower handpieces and DIN EN1113 rated hoses. Only use with non-restrictive (all pressures) handpieces. Do not use non DIN EN1113 rated standard hoses and may not be compatible with some handpieces.

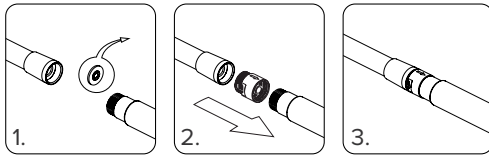
OPERATING PRESSURE
 Minimum 300 kPa
 Maximum 1000 kPa

OPERATING TEMPERATURE
 Maximum 80 °C



Oxijet™ FOR SHOWER HANDPIECE
 TP0114 0800 743 358 | www.oxijet.com

INSTRUCTIONS



1. Remove any existing flow restrictor
 2. Install the Oxijet™ and ensure seal is attached between fittings
 3. Ready to use

Note: The Oxijet™ is optimised for Felton shower handpieces and DIN EN1113 rated hoses. Only use with non-restrictive (all pressures) handpieces. Do not use non DIN EN1113 rated standard hoses and may not be compatible with some handpieces.

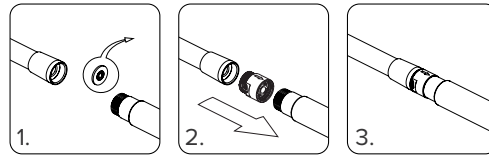
OPERATING PRESSURE
 Minimum 300 kPa
 Maximum 1000 kPa

OPERATING TEMPERATURE
 Maximum 80 °C



Oxijet™ FOR SHOWER HANDPIECE
 TP0114 0800 743 358 | www.oxijet.com

INSTRUCTIONS



1. Remove any existing flow restrictor
 2. Install the Oxijet™ and ensure seal is attached between fittings
 3. Ready to use

Note: The Oxijet™ is optimised for Felton shower handpieces and DIN EN1113 rated hoses. Only use with non-restrictive (all pressures) handpieces. Do not use non DIN EN1113 rated standard hoses and may not be compatible with some handpieces.

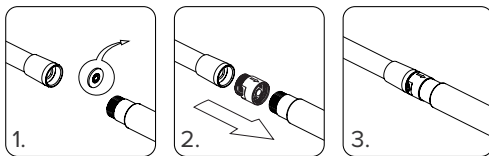
OPERATING PRESSURE
 Minimum 300 kPa
 Maximum 1000 kPa

OPERATING TEMPERATURE
 Maximum 80 °C



Oxijet™ FOR SHOWER HANDPIECE
 TP0114 0800 743 358 | www.oxijet.com

INSTRUCTIONS



1. Remove any existing flow restrictor
 2. Install the Oxijet™ and ensure seal is attached between fittings
 3. Ready to use

Note: The Oxijet™ is optimised for Felton shower handpieces and DIN EN1113 rated hoses. Only use with non-restrictive (all pressures) handpieces. Do not use non DIN EN1113 rated standard hoses and may not be compatible with some handpieces.

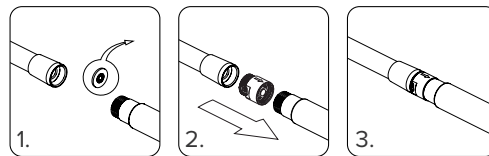
OPERATING PRESSURE
 Minimum 300 kPa
 Maximum 1000 kPa

OPERATING TEMPERATURE
 Maximum 80 °C



Oxijet™ FOR SHOWER HANDPIECE
 TP0114 0800 743 358 | www.oxijet.com

INSTRUCTIONS



1. Remove any existing flow restrictor
 2. Install the Oxijet™ and ensure seal is attached between fittings
 3. Ready to use

Note: The Oxijet™ is optimised for Felton shower handpieces and DIN EN1113 rated hoses. Only use with non-restrictive (all pressures) handpieces. Do not use non DIN EN1113 rated standard hoses and may not be compatible with some handpieces.

OPERATING PRESSURE
 Minimum 300 kPa
 Maximum 1000 kPa

OPERATING TEMPERATURE
 Maximum 80 °C

